



One Beacon Court - 151 East 58 Street

One Beacon Court

151 East 58 Street

Exceptional, Prime Location white glove condominium

Location: Midtown

Apt: #42F

Listing: #1364239

Price: \$5,600,000

Maint: \$2,522

RE tax: \$1,436

Bed: 2

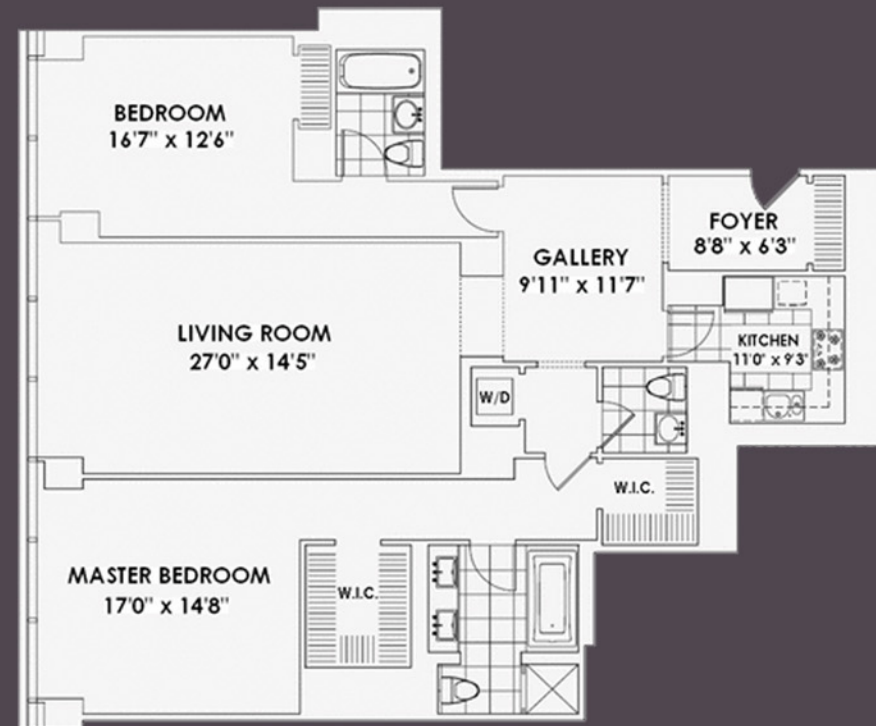
Bath: 2.5

Just listed!! One of the most sought after unit lines at One Beacon Court, New Yorks most prestigious white glove Condominium. Apt 42F is approx 1,729 SF offering the perfect 2 split bed, 2.5 baths with the most dramatic views of Central Park from every window and incredible city vistas at night. The apt features a gracious entry foyer, an elegant gallery, Huge loft like living room / dining room & masterfully proportioned rooms. The exquisite Poggenpohl kitchen has state-of-the-art appliances by Wolf, Sub-Zero, and Miele. Bathrooms are stunning and offer the highest level of finishes One beacon court, A masterpiece by starchitect Cesar Pelli, is the ultimate White Glove Condo, offering full-time Doorman and Concierge, valet parking, state-of-the-art gym, business/party room, childrens playroom and its also home to the new "Le Cirque." Ideal location, close to Central Park, Madison Avenue shopping, art galleries, museums and fine dining. A MUST SEE TROPHY PROPERT! CALL TODAY!

Listing Highlights:

- Ideal location,ultimate White Glove Condo
- Views of Central Park from every window
- Masterfully proportioned rooms
- Exquisite Poggenpohl kitchen
- Bathrooms are stunning with the highest level of finishes
- Full-time Doorman and Concierge
- Valet parking, state-of-the-art gym, business/party room, childrens playroom
- Business/party room, childrens playroom

Floor Plan:



Prudential Douglas Elliman Real Estate
575 Madison Ave, Suite 404, New York, NY 10022

OFFICE: 212-319-4109
FAX: 919-369-1452

WWW.TAVIVIANSPORNGROUP.COM
ATAVIVIAN@ELLIMAN.COM